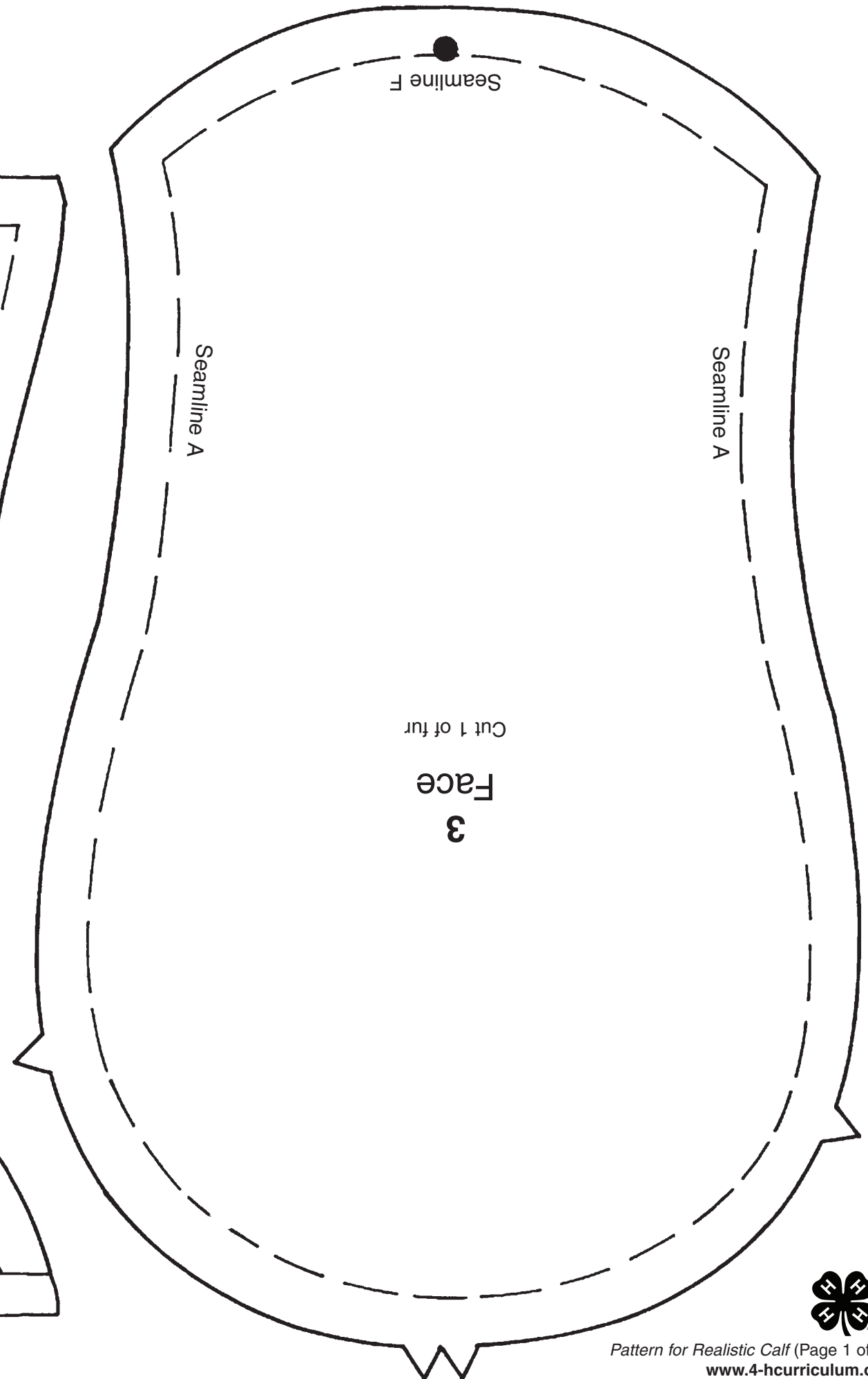
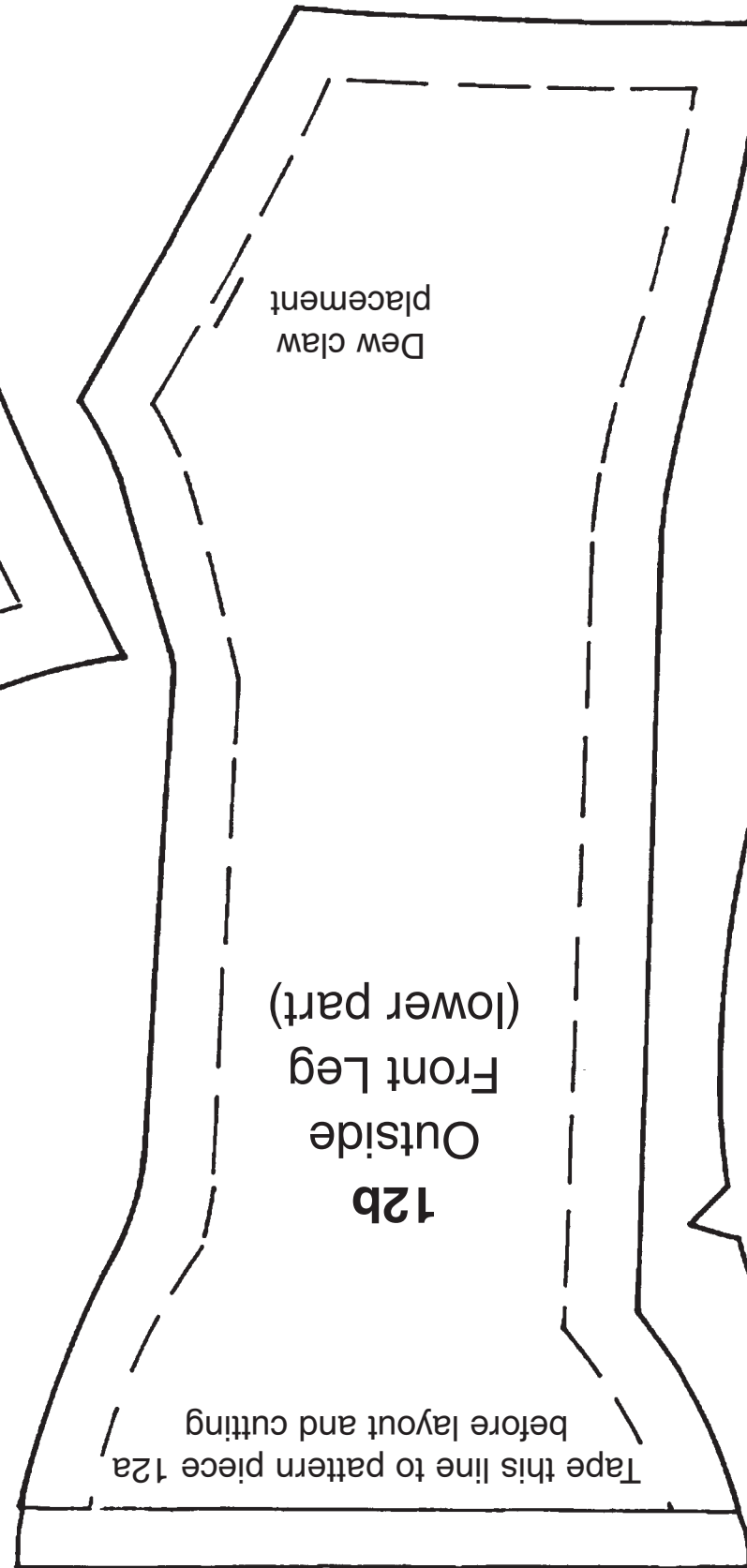
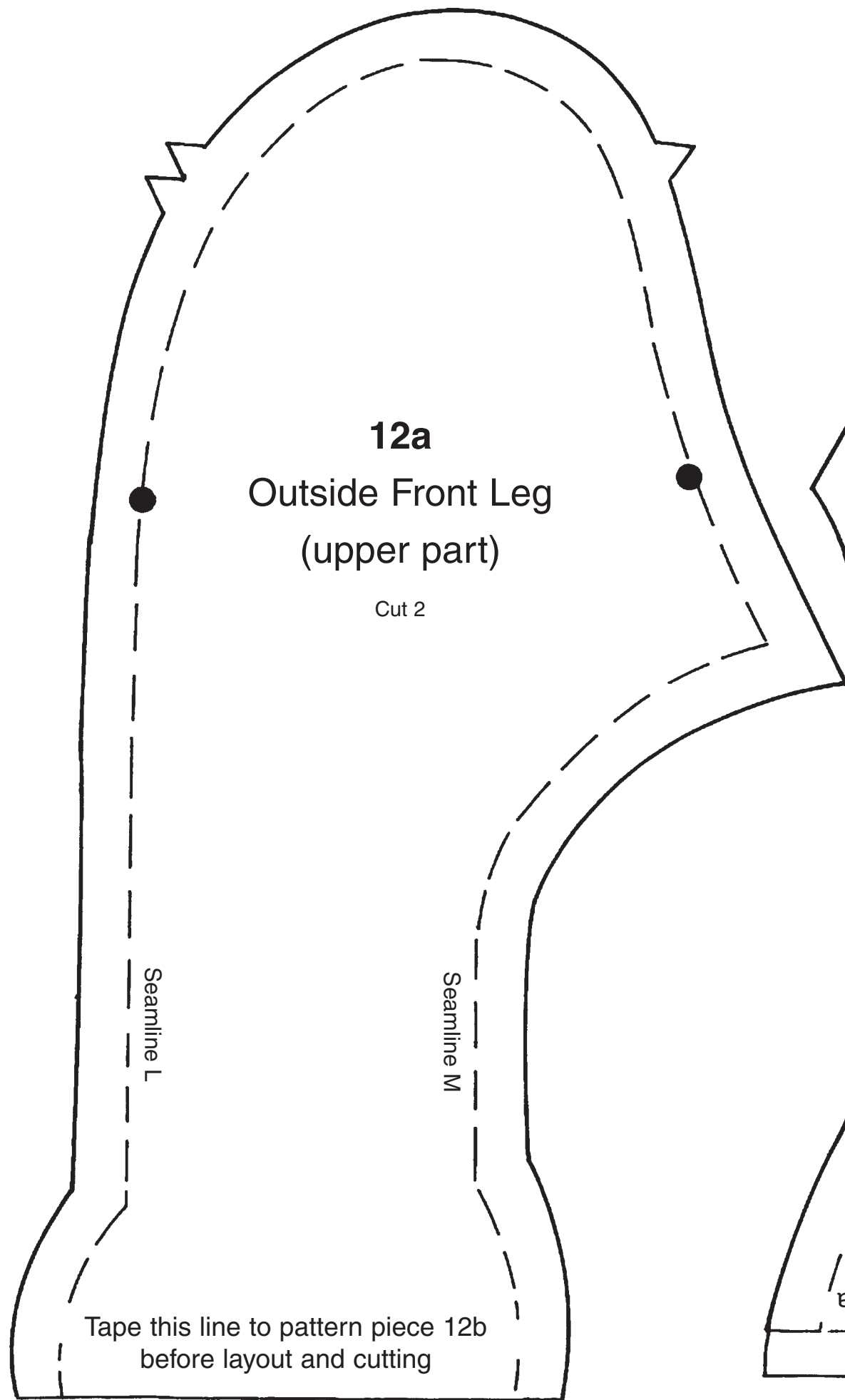
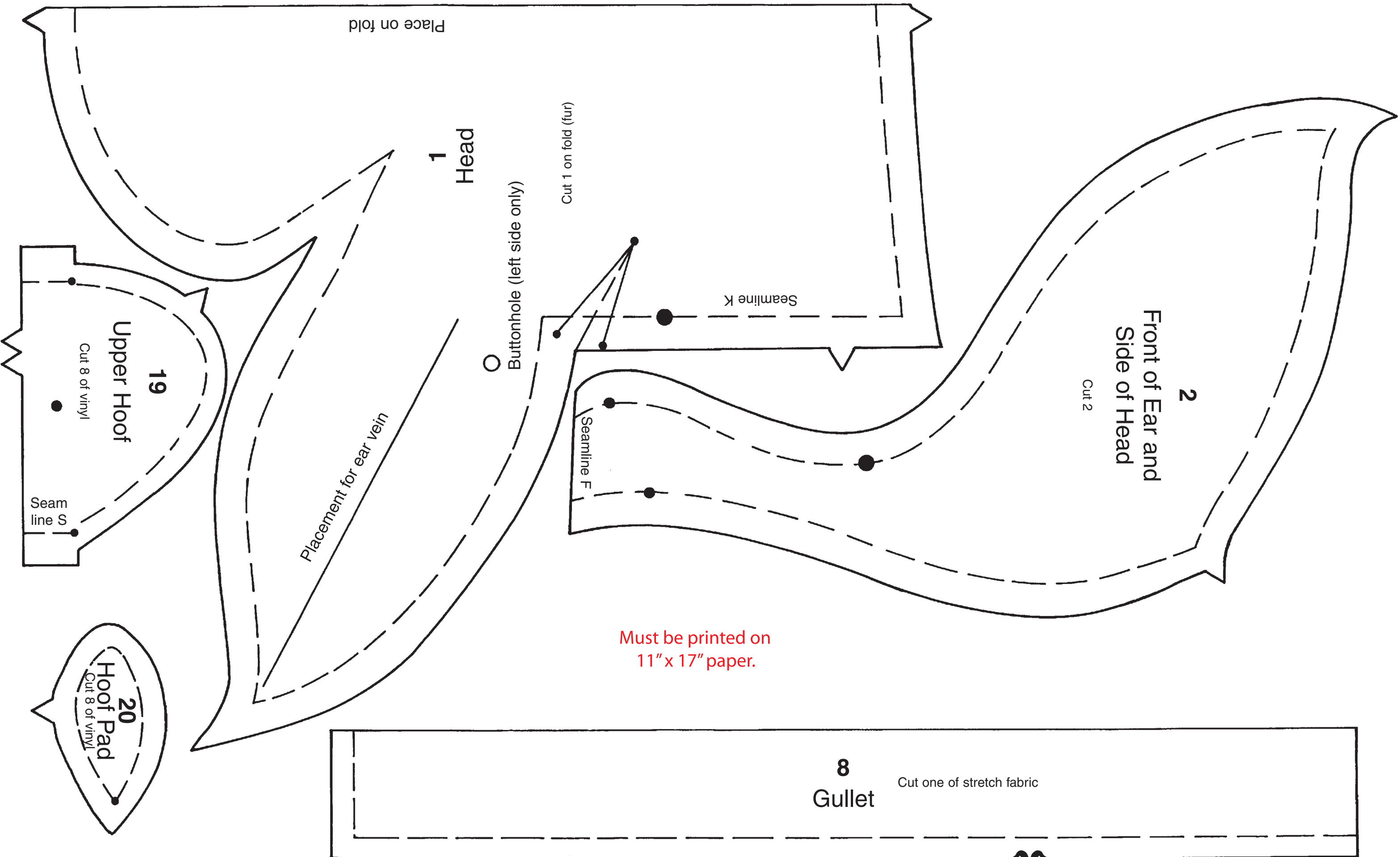


Must be printed on
11" x 17" paper.





Place on fold

1
Head

Cut 1 on fold (fur)

Buttonhole (left side only)

Seamline K

Seamline F

2
Front of Ear and
Side of Head

Cut 2

Placement for ear vein

Must be printed on
11" x 17" paper.

8
Gullet

Cut one of stretch fabric

19
Upper Hoof

Cut 8 of vinyl

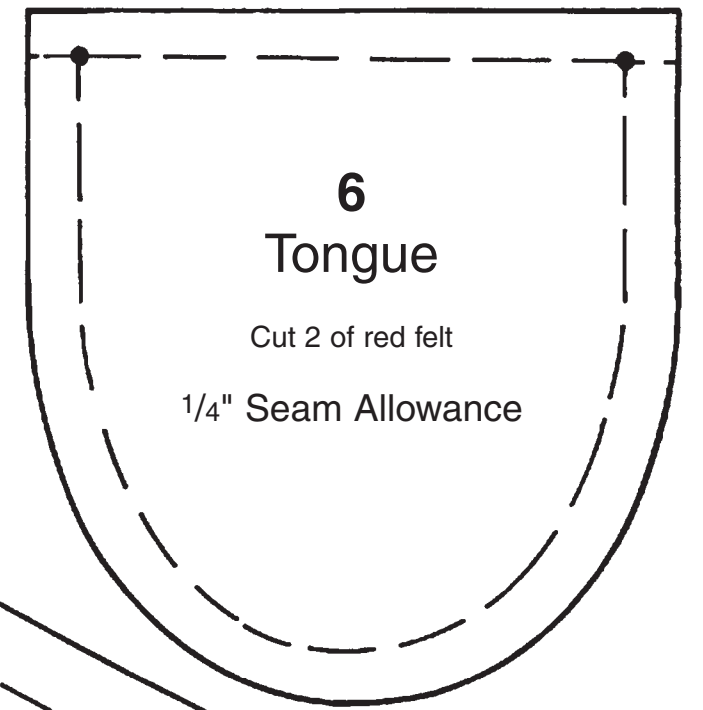
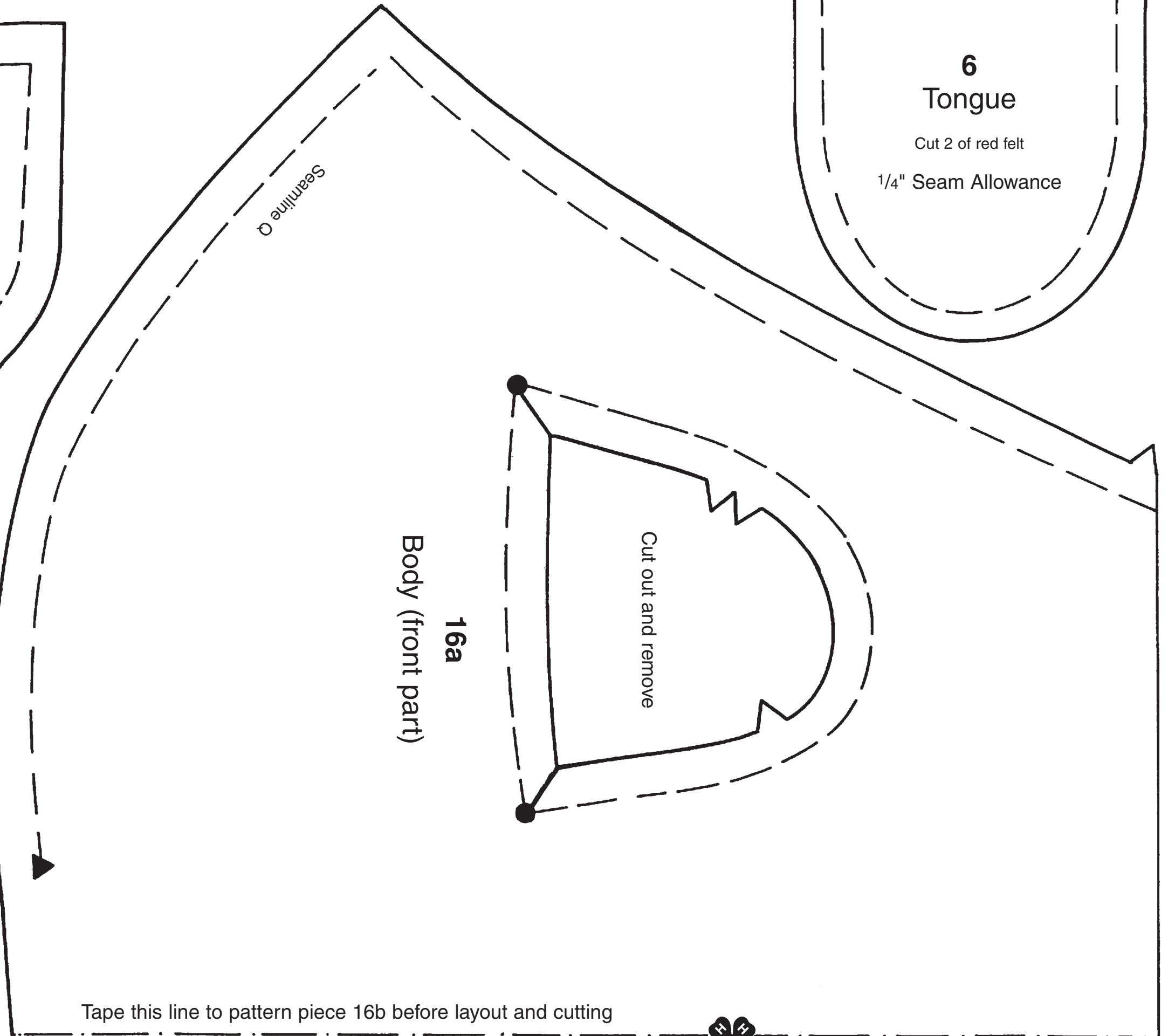
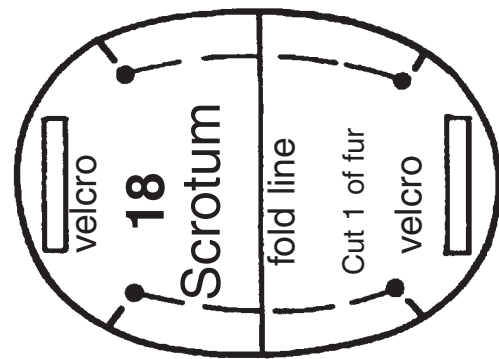
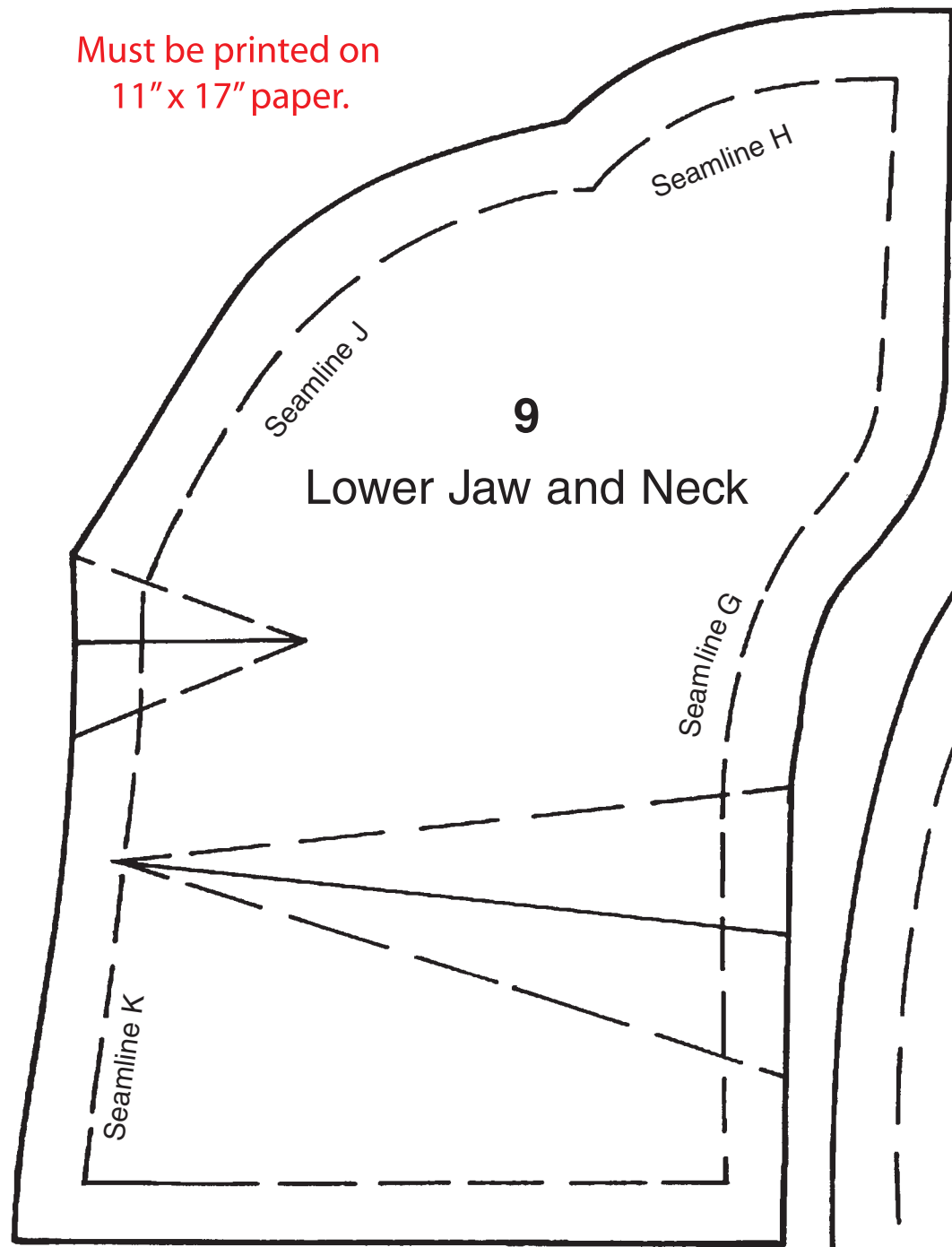
Seam line S

20
Hoof Pad

Cut 8 of vinyl



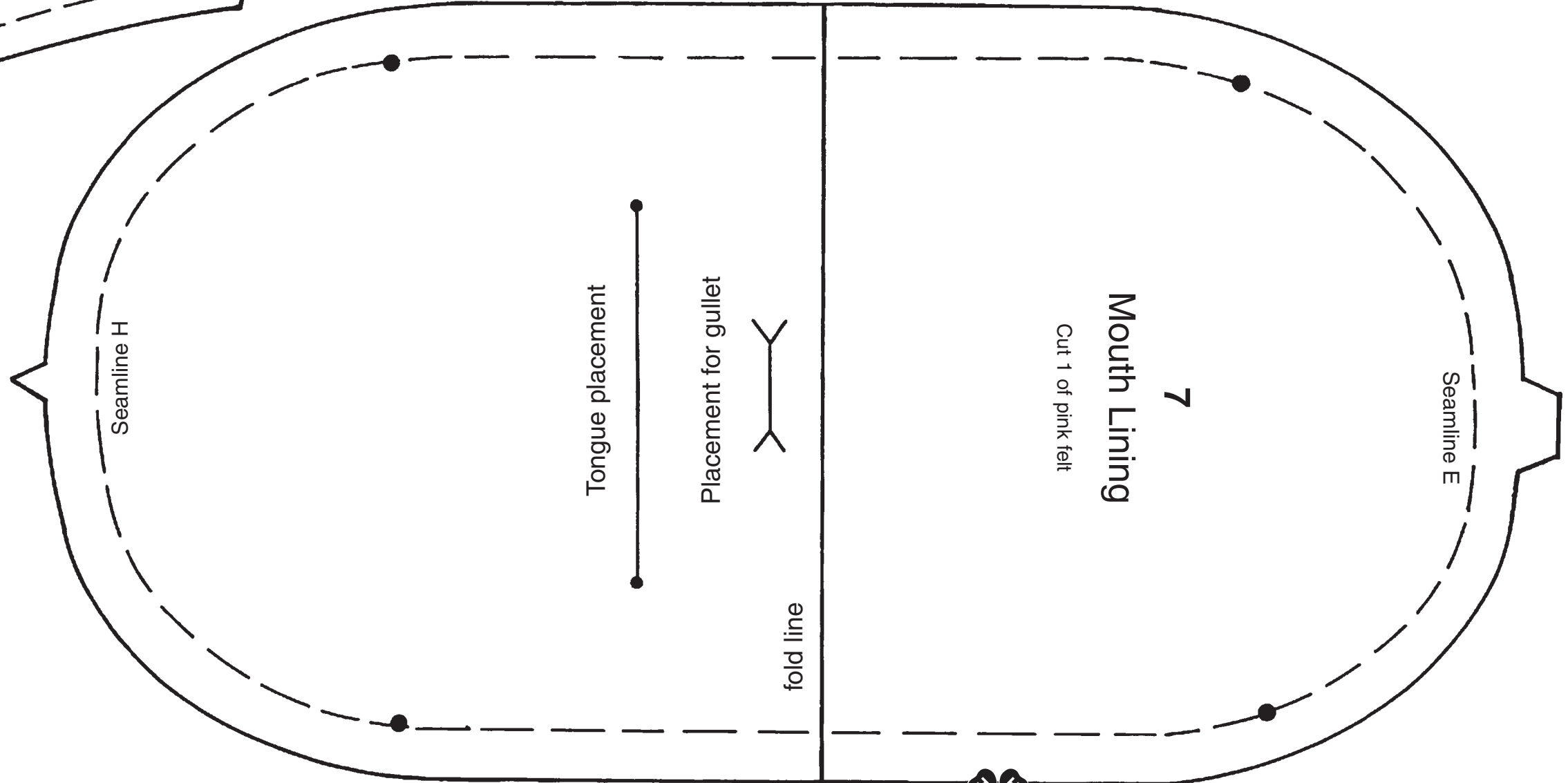
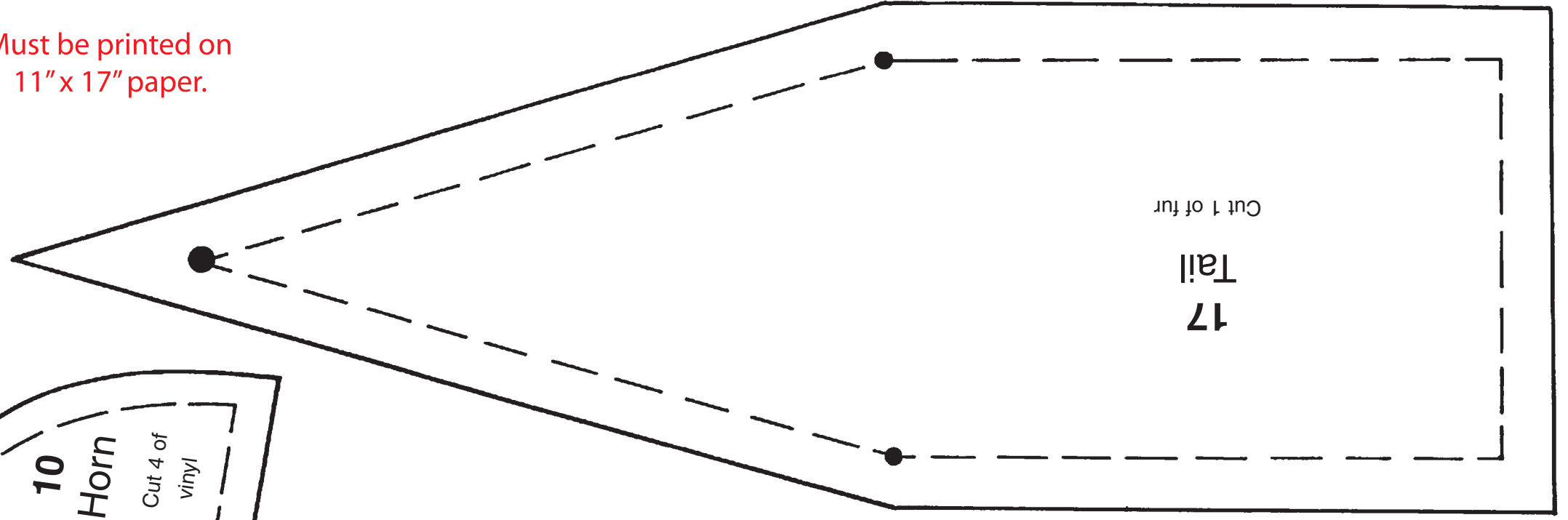
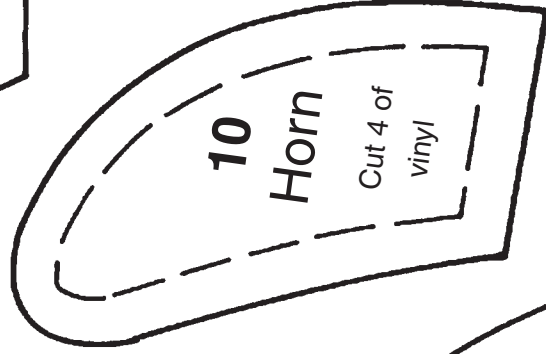
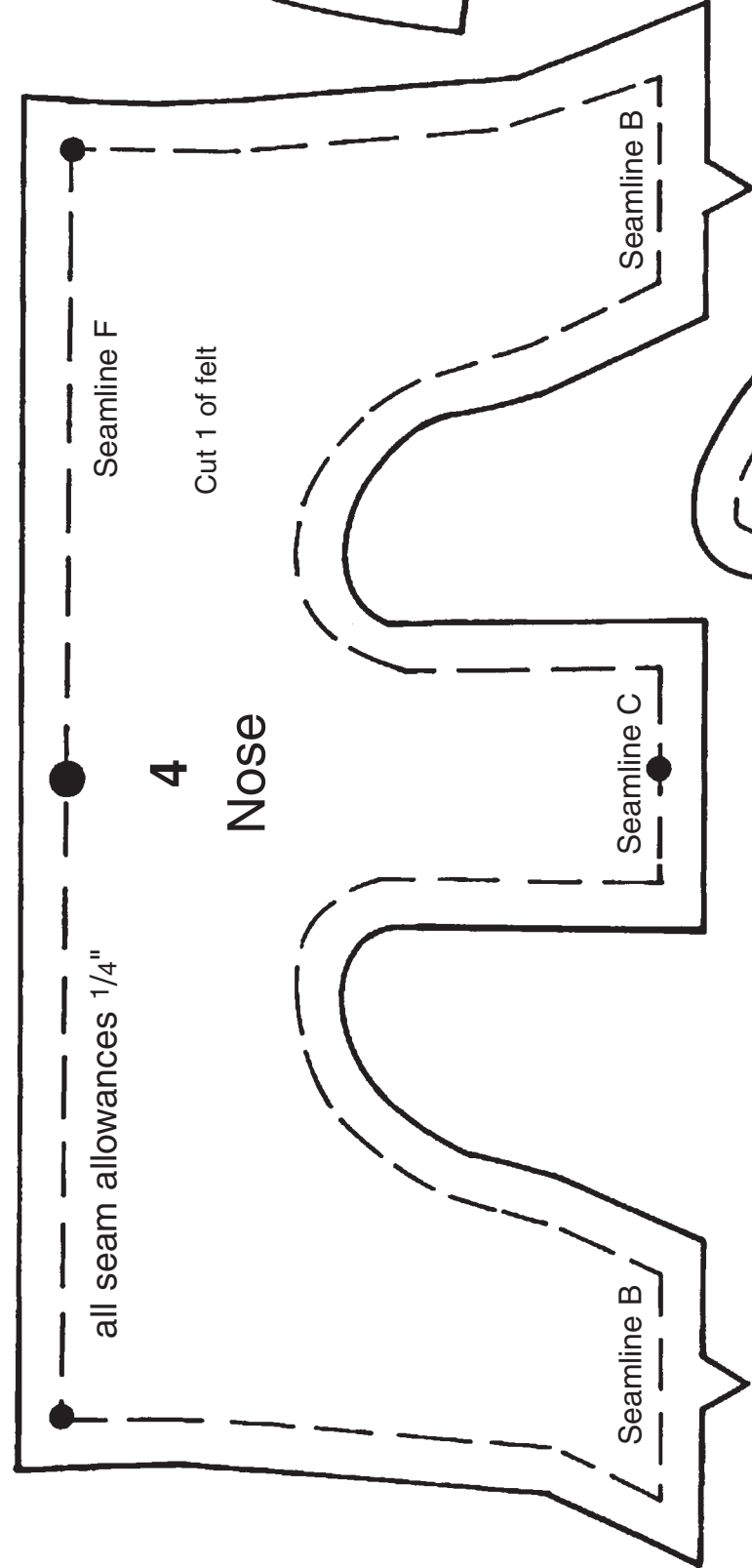
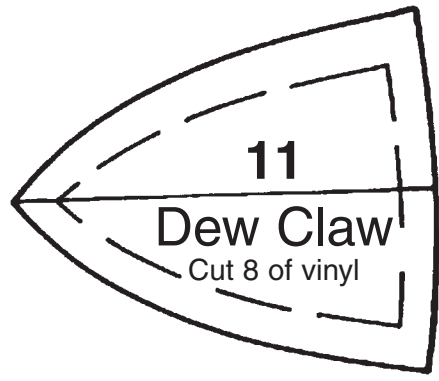
Must be printed on
11" x 17" paper.



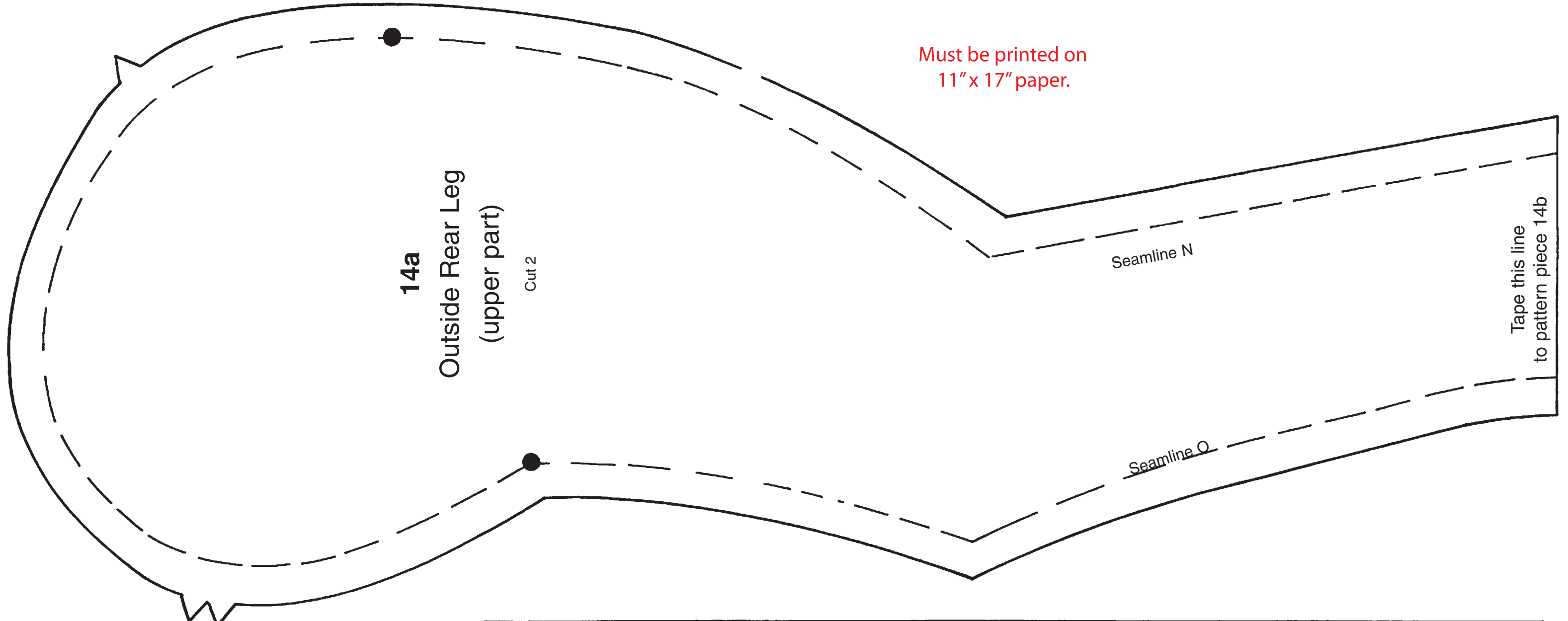
Tape this line to pattern piece 16b before layout and cutting



Must be printed on
11" x 17" paper.



Must be printed on
11" x 17" paper.



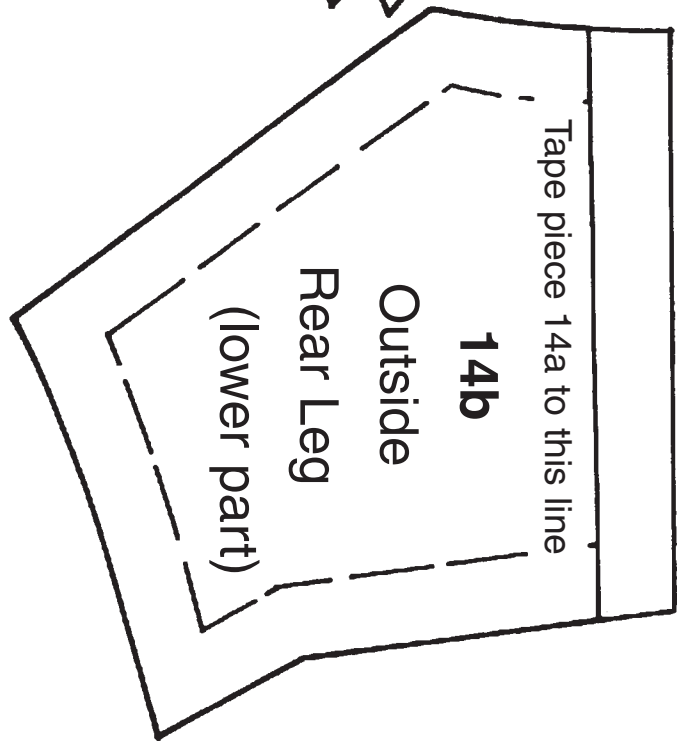
14a
Outside Rear Leg
(upper part)

Cut 2

Seamline N

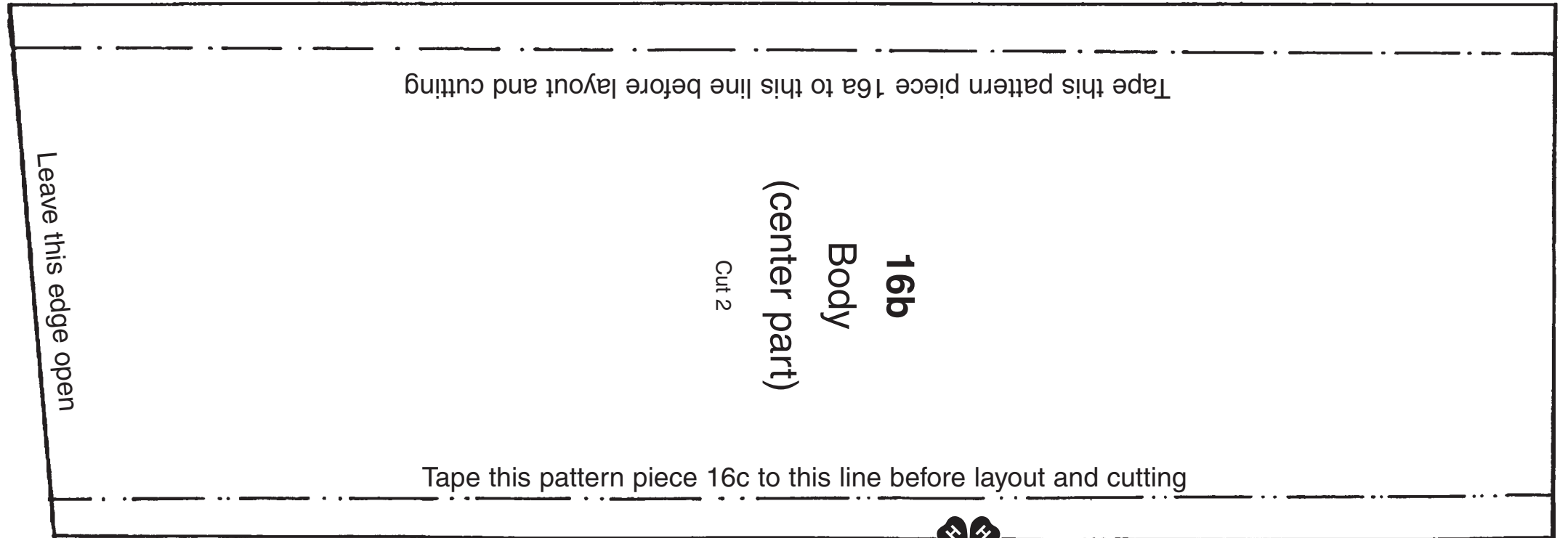
Tape this line
to pattern piece 14b

Seamline O



Tape piece 14a to this line

14b
Outside
Rear Leg
(lower part)



16b
Body
(center part)

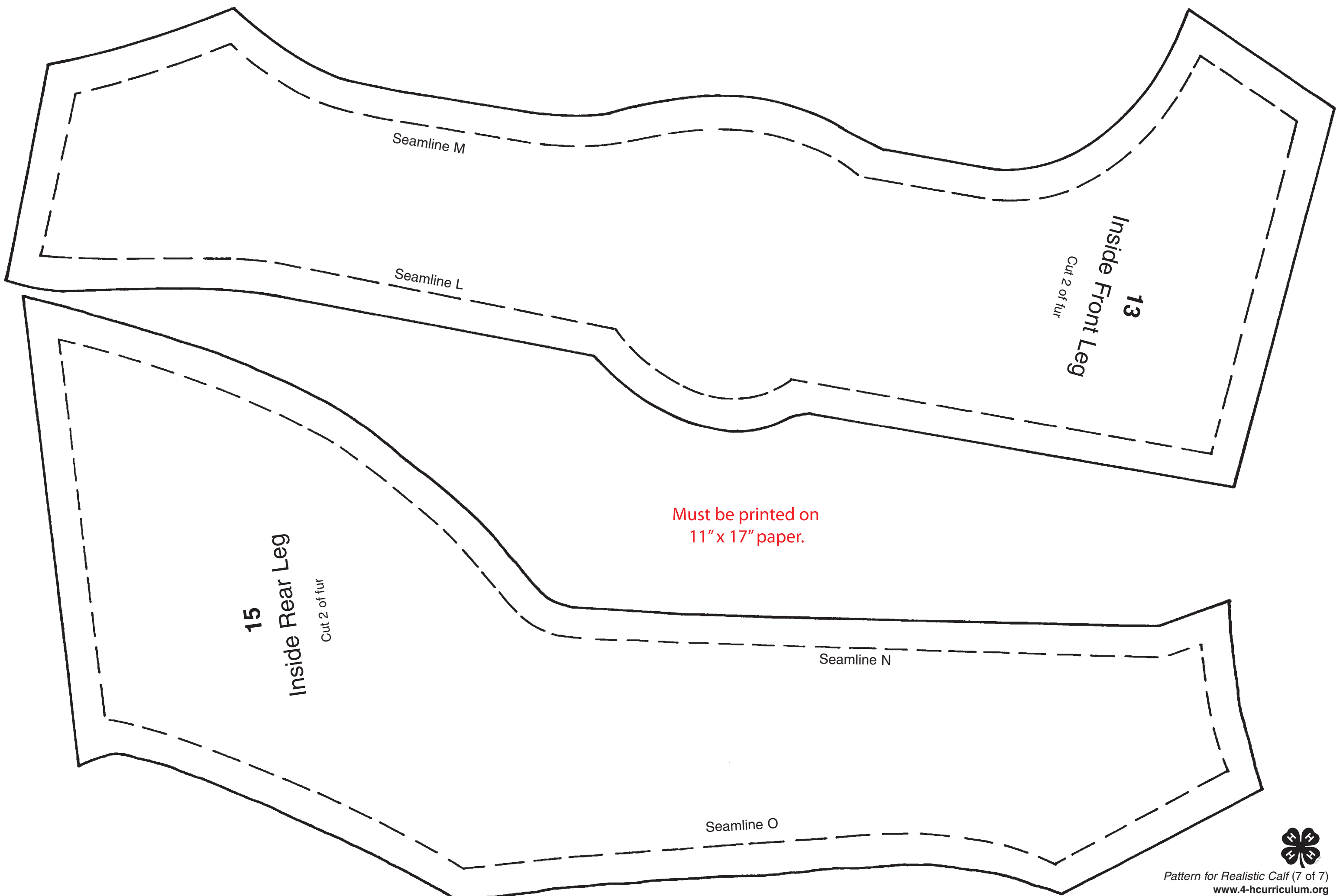
Cut 2

Tape this pattern piece 16a to this line before layout and cutting

Tape this pattern piece 16c to this line before layout and cutting

Leave this edge open





Seamline M

Seamline L

13
Inside Front Leg
Cut 2 of fur

Must be printed on
11" x 17" paper.

15
Inside Rear Leg
Cut 2 of fur

Seamline N

Seamline O

